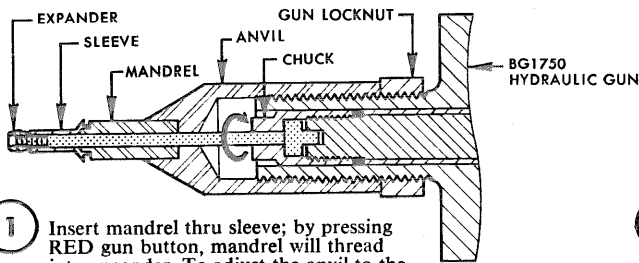
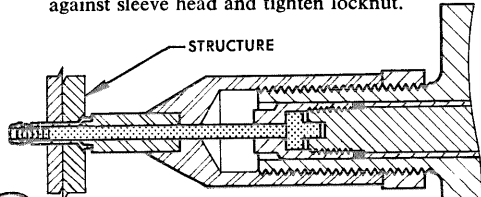


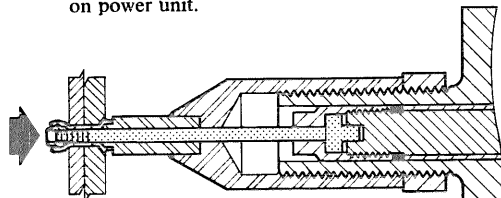
TOOLING & INSTALLATION PROCEDURE FOR INSTALLING BB134 BLIND BOLT™ ASSEMBLY



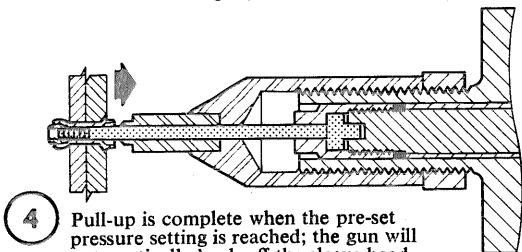
1 Insert mandrel thru sleeve; by pressing RED gun button, mandrel will thread into expander. To adjust the anvil to the correct sleeve length, spin anvil to seat against sleeve head and tighten locknut.



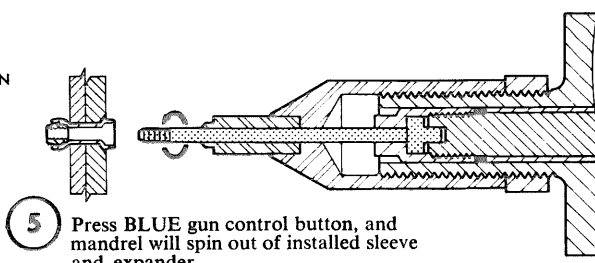
2 Insert assembled expander and sleeve thru hole in structure. Hole preparation is noted on Blind Bolt Data Sheet. Be sure correct hydraulic driving pressure is set on power unit.



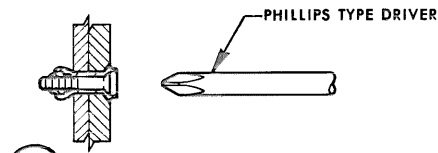
3 Press WHITE gun button to pull expander into sleeve. This pull-up action locks sleeve into structure, and swells the sleeve walls to tightly fill the hole.



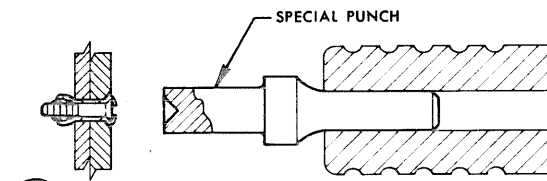
4 Pull-up is complete when the pre-set pressure setting is reached; the gun will automatically back off the sleeve head when the cycle is completed.



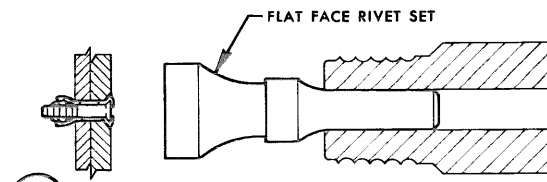
5 Press BLUE gun control button, and mandrel will spin out of installed sleeve and expander.



6 Insert core bolt into sleeve and expander, and tighten to torque limit noted on Blind Bolt Data Sheet.



7 Use special punch listed below and standard rivet gun to crimp over flange to retain core bolt.



8 Finish crimping operation by hitting with flat face rivet set or equivalent. Installation of Blind Bolt Assembly is now complete.

PART NUMBER ORDER CHART

BLIND BOLT ASSEMBLY		DRIVING TOOLS			CORE BOLT DRIVER	PUNCH		HYDRAULIC GUN	INSTALLATION PRESSURE	
FIRST DASH NO.	NOM. DIA.	ANVIL	CHUCK	MANDREL		.498 SHANK	.401 SHANK		AIR PRESSURE PSI	EQUIVALENT LOAD IN POUNDS
-5	5/32	A50-5	C1-5	M1-5	Phillips #1	BBP3-5	BBP4-5	BG1750	500	900

NECESSARY ITEMS FOR A COMPLETE INSTALLATION ASSEMBLY:

- 1 Anvil
- 1 Chuck
- 1 Mandrel
- 1 Core Bolt Driver
- 1 Punch
- 1 Hydraulic Gun
- 1 Rivet Gun
- 1 Flat Face Rivet Set or Equivalent
- 1 Power Unit
- 110V Electrical Outlet (For Using BP4000 Power Unit Only)
- 90 psi Air Supply (For Using BP3000 and BP7000 Power Units)



2600 Skypark Drive, Torrance, California 90509
Telephones: (213) 326-8110

2-109922-1
Printed in U.S.A.
©1973, Hi-Shear Corporation
CODE IDENTIFICATION NO. 73197