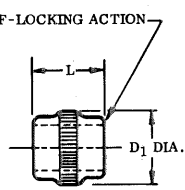
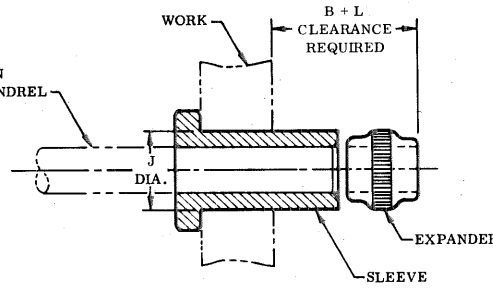


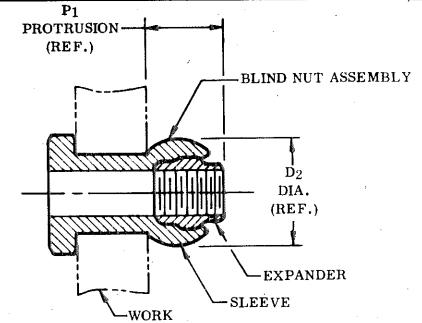
SLEEVE



EXPANDER



SLEEVE AND EXPANDER ASSEMBLED ON MANDREL, INSERTED INTO WORK, READY TO SET



COMPLETED BLIND NUT ASSEMBLY

BLIND NUT ASSEMBLY		BN501 SLEEVE							BB341G EXPANDER				HOLE PREPARATION			PROTRUSION AFTER INSTALLATION	
FIRST DASH NUMBER		FIRST DASH NUMBER	A DIA.	B GRIP RANGE 0-1/4	B GRIP RANGE 1/4-1/2	B GRIP RANGE 1/2-3/4	D DIA.	H	PART NUMBER	D1 DIA.	L	THREAD	J HOLE DIA.			D2 DIA.	P1
-440		-440	.294 .274	.210			.169 .167	.055 .045	BB341G-5	.167	.153	4-40UNJC-3B	.173 .170			.210	.175
-632		-632	.315 .295	.280			.218 .216	.065 .055	BB341G-632	.217	.215	6-32UNJC-3B	.222 .219			.285	.260
-832		-832	.412 .387	.315	.330		.257 .255	.090 .080	BB341G-8	.255	.245	8-32UNJC-3B	.264 .258			.335	.290
-1020		-1032	.505 .475	.380	.420	.460	.312 .309	.110 .100	BB341G-1020	.309	.307	10-20UNJC-3B	.319		.410	.350	
-1032								BB341G-1032	10-32UNJF-3B			.313					
-420		-428	.615 .580	.450	.450	.450	.390 .387	.155 .145	BB341G-420	.383	.368	1/4-20UNJC-3B	.397		.510	.420	
-428								BB341G-12	1/4-28UNJF-3B			.391					
-518		-524	.803 .768	.500	.500	.500	.468 .465	.160 .150	BB341G-518	.458	.429	5/16-18UNJC-3B	.475		.600	.470	
-524								BB341G-14	5/16-24UNJF-3B			.469					
-616		-624	.896 .861	.550	.550	.550	.530 .527	.185 .175	BB341G-616	.521	.491	3/8-16UNJC-3B	.539		.662	.530	
-624								BB341G-16	3/8-24UNJF-3B			.531					

BN501 SLEEVE

NOTE: Concentricity: Hole to "D" diameter within .005 TIR;
Head to "D" diameter within .010 TIR.

MATERIAL: A-286 Cres per AMS5731
HEAT TREAT: Anneal.

FINISH: Sandblast.

CODE: First dash number indicates size of bolt to be used.
Second dash number indicates grip length (thickness of work) in 16ths.

EXAMPLE: BN501-428-12 = Sleeve for 1/4-28 bolt, 3/4 grip length.

BB341G EXPANDER

NOTE: Threads per MIL-S-8879.

MATERIAL: Type 431 stainless steel per Spec. QQ-S-763.

HEAT TREAT: 125,000 psi shear minimum.

FINISH: Silver plate per AMS2410, .0002-.0004 thick.

CODE: Dash number indicates Expander used in assembly.
Letter "G" indicates type of finish.

EXAMPLE: BB341G-12 = Expander for 1/4-28 bolt, silver plated.

BN134 BLIND NUT ASSEMBLY

CODE: First dash number indicates size of bolt to be used.
Second dash number indicates grip length (thickness of work) in 16ths. Letter "G" after basic assembly number indicates type of finish.

EXAMPLE: BN134G-428-12

- 3/4 Grip Length
- For 1/4-28 Bolt
- Blind Nut Assembly which includes: BN501 Sleeve and BB341G Expander

U.S. Patents 2,789,619; 2,946,208; and 2,959,999.
Foreign patents granted and pending.

TITLE					
BLIND NUT ASSEMBLY					
PROTRUDING HEAD STYLE					
DRAWN	DATE	APPROVED	DATE	REVISION	DRAWING NUMBER
<i>Shrade</i>	1-30-73	<i>Simlison</i>	2-16-73	○	BN134