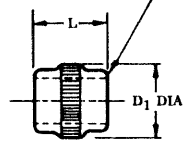
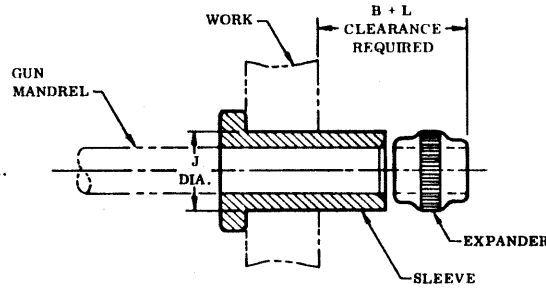


SLEEVE

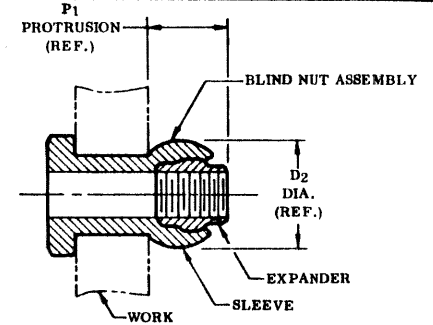
ELLIPTICAL SELF-LOCKING ACTION



EXPANDER



SLEEVE AND EXPANDER ASSEMBLED ON MANDREL, INSERTED INTO WORK, READY TO SET



COMPLETED BLIND NUT ASSEMBLY

BLIND NUT ASSEMBLY		BN326 AND BN326PB SLEEVE							BB341, BB341G AND BB341PB EXPANDER				HOLE PREPARATION		PROTRUSION AFTER INSTALLATION	
FIRST DASH NUMBER		FIRST DASH NUMBER	A DIA.	B GRIP RANGE 0-.5	B GRIP RANGE 1/4-1 1/4	B GRIP RANGE 1 1/2-1 1/2	D DIA.	H	PART NUMBER	D1 DIA.	L	THREAD	J HOLE DIA.		D2 DIA.	P1
-440		-440	.294 .274	.210			.169 .167	.055 .045	BB341-5	.167	.153	4-40UNC-3B	.173 .170		.210	.175
-632		-632	.315 .295	.280			.218 .216	.065 .055	BB341-632	.217	.215	6-32UNC-3B	.222 .219		.285	.260
-832		-832	.412 .387	.315	.330		.257 .255	.090 .080	BB341-8	.255	.245	8-32UNC-3B	.264 .258		.335	.290
-1024		-1032	.505 .475	.380	.420	.460	.312 .309	.110 .100	BB341-1024 BB341-1032	.309 .307	.307	10-24UNC-3B 10-32UNF-3B	.319 .313		.410	.350
-420		-428	.615 .580	.450	.450	.450	.390 .387	.155 .145	BB341-420 BB341-12	.383	.368	1/4-20UNC-3B 1/4-28UNF-3B	.397 .391		.510	.420
-518		-524	.803 .768	.500	.500	.500	.468 .465	.160 .150	BB341-518 BB341-14	.458	.429	5/16-18UNC-3B 5/16-24UNF-3B	① .477 .469		.600	.470
-616		-624	.896 .861	.550	.550	.550	.530 .527	.185 .175	BB341-616 BB341-16	.521	.491	3/8-16UNC-3B 3/8-24UNF-3B	.539 .531		.662	.530

BN326 AND BN326PB SLEEVE

① NOTE: Concentricity: Hole to "D" diameter within .005 FIR;
Head to "D" diameter within .010 FIR.

MATERIAL: Type 305 stainless steel per QQ-S-763.

FINISH: BN326 - Sandblast.

② BN326PB - Cadmium plate per QQ-P-416, Type II, Class 2.

CODE: First dash number indicates size of bolt to be used.
Second dash number indicates grip length (thickness of work) in 16ths.

③ Letters "PB" indicate cadmium plate per QQ-P-416, Type II, Class 2.

EXAMPLE: BN326-428-12 = Sleeve for 1/4-28 bolt, 3/4 grip length.

BB341, BB341G, BB341PB EXPANDER

① NOTE: Threads per MIL-S-8879.

② MATERIAL: Type 431 stainless steel per Spec. AMS 5628.

HEAT TREAT: 125,000 psi shear minimum.

③ FINISH: BB341 - Cadmium plate per QQ-P-416, Type I, Class 2.
BB341G - Silver plate per AMS 2410, .0002 - .0004 thick.
BB341PB - Cadmium plate per QQ-P-416, Type II, Class 2.

CODE: Dash number indicates Expander used in assembly.
Letters "G" and "PB" indicate type of finish.
No letter indicates cadmium plate, Type I.

EXAMPLE: BB341-12 - Expander for 1/4-28 bolt, cadmium plate, Type I.

BN356, BN356G AND BN356PB BLIND NUT ASSEMBLY

CODE: First dash number indicates size of bolt to be used.
Second dash number indicates grip length (thickness of work) in 16ths. Letters "G" and "PB" after basic assembly number indicate type of finish. No letter indicates Expander cadmium plated, Type I.

EXAMPLE: BN356-428-12
└── 3/4 Grip Length
└── For 1/4-28 Bolt
Blind Nut Assembly which includes:
BN326 Sleeve and BB341 Expander

BN356G-428-12 = As example except with Expander BB341G.
BN356PB-428-12 = Sleeve and Expander Cadmium Plated Type II.

U.S. PATENT 2,959,999. FOREIGN PATENTS
ISSUED AND PENDING.

TITLE						
BLIND NUT ASSEMBLY						
PROTRUDING HEAD STYLE						
DRAWN	DATE	APPROVED	DATE	REVISION	DATE	DRAWING NUMBER
V. H.	3-28-80	Schuster	3-28-80	⑧	D. P. S. 3-28-77	BN356