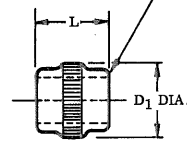
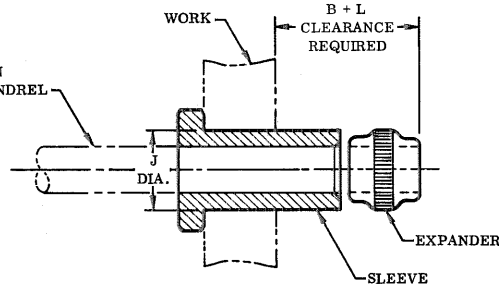


SLEEVE

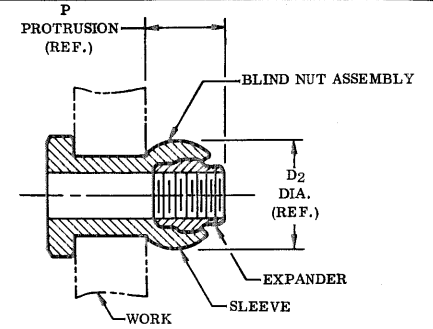
ELLIPTICAL SELF-LOCKING ACTION



EXPANDER



SLEEVE AND EXPANDER ASSEMBLED ON MANDREL, INSERTED INTO WORK, READY TO SET



COMPLETED BLIND NUT ASSEMBLY

BLIND NUT ASSEMBLY		BN326 SLEEVE							BB567 EXPANDER				HOLE PREPARATION			PROTRUSION AFTER INSTALLATION	
FIRST DASH NUMBER	FIRST DASH NUMBER	A DIA.	B GRIP RANGE 0-.34	B GRIP RANGE 3/8-1 1/4	B GRIP RANGE 1 3/4-1 5/8	D DIA.	H	PART NUMBER	D1 DIA.	L	THREAD	J HOLE DIA.	D2 DIA.	P			
-428	-428	.615 .580	.450	.450	.450	.390 .387	.155 .145	BB567-12	.383	.370	1/4-28UNJF-3B	.397 .391	.510	.420			

**BN326 SLEEVE**

NOTE: Concentricity: I. D. to "D" diameter within .005 FIR; Head to "D" diameter within .010 FIR.

① MATERIAL: 305 stainless steel per QQ-S '63.

① FINISH: Abrasive clean & passivate.

CODE: First dash number indicates nominal diameter of bolt to be used.  
Second dash number indicates grip length (thickness of work) in 16ths.

EXAMPLE: BN326-428-6 = Sleeve for 1/4-28 bolt, 3/8 grip length.

**BB567 EXPANDER**

NOTE: Threads per MIL-S-8879.

MATERIAL: PH13-8Mo stainless steel per AMS5629.

HEAT TREAT: 125,000 psi shear minimum.

① FINISH: Dry film lube per MIL-L-8937, (.0002-.0005 thick), and cetyl alcohol lube per Hi-Shear Spec. 305.

CODE: Dash number indicates nominal diameter of bolt used in assembly.

EXAMPLE: BB567-12 = Expander for 1/4-28 bolt.

**BN357 BLIND NUT ASSEMBLY**

CODE: First dash number indicates nominal diameter of bolt to be used.  
Second dash number indicates grip length (thickness of work) in 16ths.

EXAMPLE: BN357-428-6  
└─ 3/8 Grip Length  
└─ For 1/4-28 Bolt  
└─ Blind Nut Assembly which includes:  
    BN326 Sleeve and BB567 Expander

U. S. Patents 2,789,619; 2,946,208; and 2,959,999.  
Foreign patents granted and pending.

TITLE						
<b>BLIND NUT ASSEMBLY</b>						
PROTRUDING HEAD STYLE						
DRAWN	DATE	APPROVED	DATE	REVISION	DATE	DRAWING NUMBER
Shrode	12-15-72	G.S.	12-15	①	Shrode 3-1-74	BN357