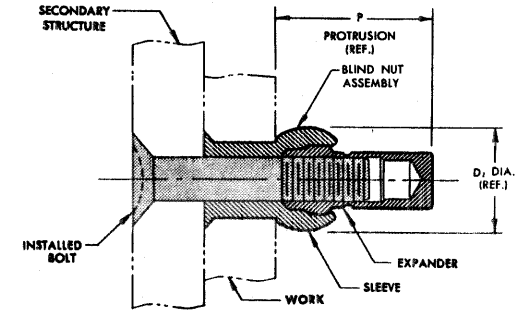


SLEEVE AND EXPANDER ASSEMBLED ON MANDREL, INSERTED INTO WORK, READY TO SET.



COMPLETED BLIND NUT ASSEMBLY SHOWING SECONDARY STRUCTURE AND INSTALLED BOLT

BN388 BLIND NUT ASSEMBLY		BN330 SLEEVE						BB348 EXPANDER				HOLE PREPARATION		PROTRUSION AFTER INSTALLATION	
FIRST DASH NUMBER	FIRST DASH NUMBER	A DIA.	B GRIP RANGE 0-1/4	B GRIP RANGE 1/4-1/2	B GRIP RANGE 1/2-1 1/4	D DIA.	PART NUMBER	D1 DIA.	L	THREAD	T (REF)	J HOLE DIA.	D2 DIA.	P	
-632	-632	.278 .273	.280			.218 .216	BB348-632	.217	.610	6-32UNJC-3B	.39	.222 .219	.285	.655	
-832	-832	.317 .312	.315	.330		.257 .255	BB348-832	.255	.650	8-32UNJC-3B	.43	.264 .258	.335	.695	
-1024	-1032	.372 .367	.380	.420	.460	.312 .309	BB348-1024	.309	.830	10-24UNJC-3B	.47	.319 .313	.410	.870	
-1032	-1032	.372 .367	.380	.420	.460	.312 .309	BB348-1032	.309	.710	10-32UNJF-3B	.47	.319 .313	.410	.750	
-420	-428	.450 .445	.450	.450	.450	.390 .387	BB348-420	.383	.980	1/4-20UNJC-3B	.61	.397 .391	.510	1.030	
-428	-428	.450 .445	.450	.450	.450	.390 .387	BB348-12	.383	.950	1/4-28UNJF-3B	.61	.397 .391	.510	1.000	
-518	-524	.528 .523	.500	.500	.500	.468 .465	BB348-518	.458	1.100	5/16-18UNJC-3B	.68	.477 .469	.600	1.140	
-524	-524	.528 .523	.500	.500	.500	.468 .465	BB348-14	.458	1.010	5/16-24UNJF-3B	.68	.477 .469	.600	1.050	
-616	-624	.590 .585	.550	.550	.550	.530 .527	BB348-616	.521	1.170	3/8-16UNJC-3B	.73	.539 .531	.662	1.210	
-624	-624	.590 .585	.550	.550	.550	.530 .527	BB348-16	.521	1.070	3/8-24UNJF-3B	.73	.539 .531	.662	1.110	

BN330 SLEEVE

NOTE: 1. Concentricity: Hole to "D" diameter within .005 TIR.
"D" diameter to head within .005 TIR.

Ⓜ MATERIAL: Type 305 stainless steel per QQ-S-763.

CODE: First dash number indicates size of bolt to be used.
Second dash number indicates grip length (thickness of work) in 16ths.

EXAMPLE: BN330-624-12 = Sleeve for 3/8-24 bolt, 3/4 grip length.

BB348 EXPANDER

NOTE: Threads per MIL-S-8879.

MATERIAL: Type 431 stainless steel per Spec. AMS5628.

HEAT TREAT: 125,000 psi shear minimum.

FINISH: BB348-() = Cadmium plate per QQ-P-416, Type I, Class 3.
BB348-()PB = Cadmium plate per QQ-P-416, Type II, Class 2.
BB348-()TF = Hi-Kote 2.

CODE: Dash number indicates expander used in assembly.
Letters "LK" after part number indicate expander with locking feature.

EXAMPLE: BB348-16 = Expander for 3/8-24 bolt with cadmium plate per QQ-P-416, Type I, Class 3 finish, no lock.
BB348LK-16TF = Expander for 3/8-24 bolt with locking feature and Hi-Kote 2 finish.

BN388 BLIND NUT ASSEMBLY

CODE: First dash number indicates size of bolt to be used.
Second dash number indicates grip length (thickness of work) in 16ths.

EXAMPLE: BN388LK-624-12

— Grip Length (Thickness of Work) in 16ths = 3/4 Grip Length
— Expander Finish
— Size of Bolt To Be Used = 3/8-24 Bolt
— Locking Feature (Optional)
— Blind Nut Assembly

BN388LK-624TF12 = Same as above except expander with Hi-Kote 2 finish.

TITLE					
BLIND NUT™ ASSEMBLY					
100° COUNTERSUNK SHALLOW HEAD					
DOME TYPE					
DRAWN	DATE	APPROVAL	DATE	REVISION	DRAWING NUMBER
				(10)	BN388

"Blind Nut" is a trademark of Hi-Shear Corporation.