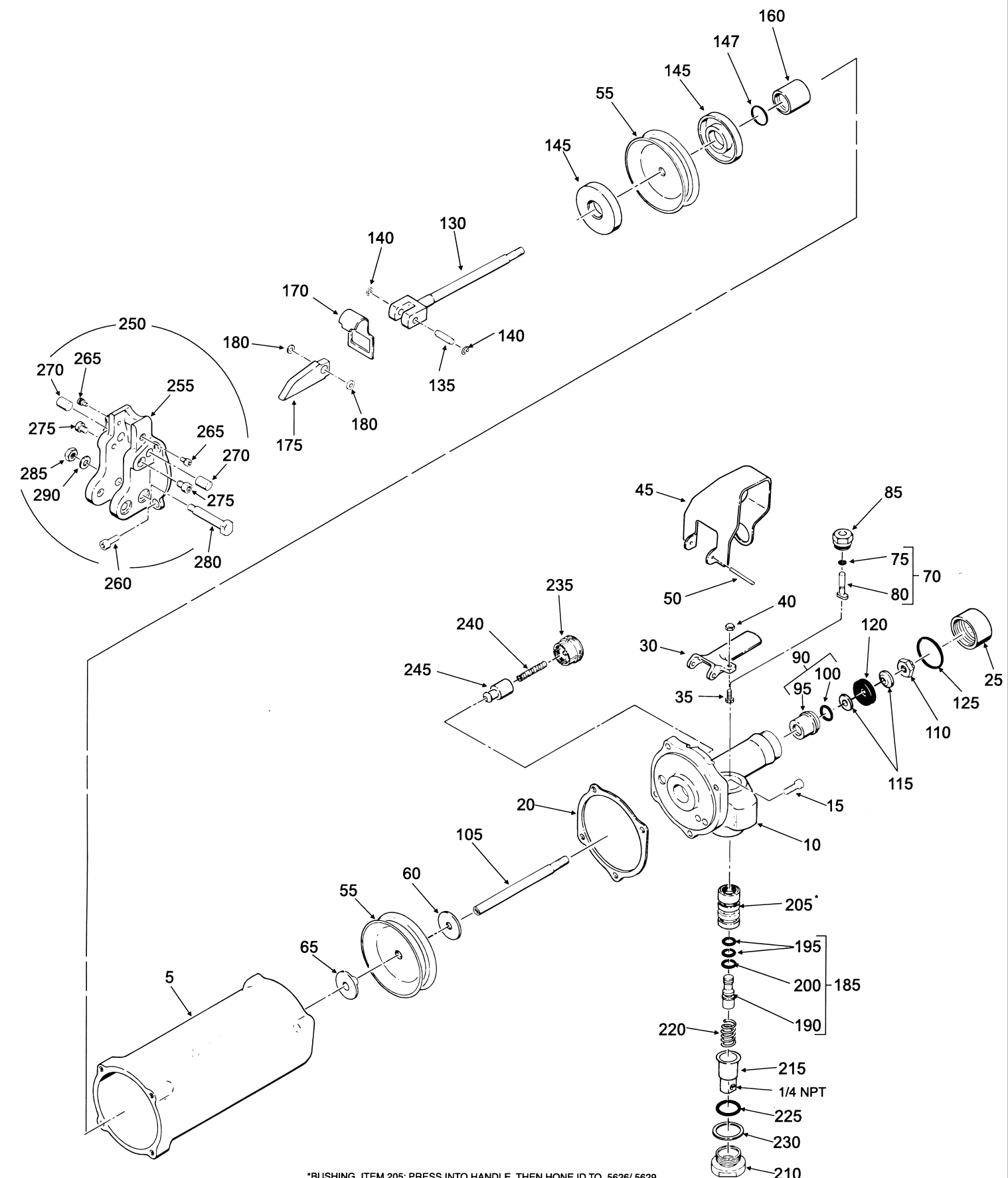


Option -
2318 Safety Lever Assy

005	2313	Lever	1
010	2315	Lever	1
015	1000	Pin	1
020	2314	Spring	1



*BUSHING, ITEM 205: PRESS INTO HANDLE, THEN HONE ID TO .5626/.5629.

COMPRESSION RIVETER POWER UNIT - ALLIGATOR JAW MODEL 750A

Item	Part No.	Description	Qty.	Item	Part No.	Description	Qty.
005	2064	Cylinder	1	145	2079	Spacer	2
010	5649	Handle assy.	1	147	922	O-ring	1
015	1065	Screw, soc hd cap	4	160	295	Bushing	1
020	2070	Gasket, cylinder head	1	170	2061	Spring	1
025	2316	Plug, return cylinder	1	175	560	Wedge	1
030	1484	Lever	1	180	561	Shim, stamping	2
035	409	Screw, adjusting, slotted	1	185	2080	Valve assy., throttle	1
040	401	Nut, hex, acorn	1	190	2490	. Valve, throttle	1
045	2430	Guard	1	195	2266	. O-ring	2
050	3129	Dowel pin	1	200	548	. O-ring	1
055	2071	Piston	2	205	406	Bushing	1
060	2075	Spacer	1	210	1079	Nut, swivel, air inlet	1
065	2073	Bushing, flange	1	215	1145	Swivel, air inlet	1
070	2081	Push pin assy.	1	220	1080	Spring, valve, throttle	1
075	564	. O-ring	1	225	1228	O-ring	1
080	2491	. Push pin, throttle valve	1	230	402	Gasket	1
085	403	Bushing	1	235	1127	Nut, adjustable	1
090	1094	Bushing assy.	1	240	1101	Spring, compression	1
095	2501	. Bushing, flange	1	245	1100	Valve, exhaust	1
100	922	. O-ring	1	250	17076	Adapter assy.	1
105	2077	Shaft, piston	1	255	6785	. Adapter	1
110	2322	Nut, elastic stop	1	260	1065	. Screw	4
115	2067	Washer, cone	2	265	1099	. Screw	2
120	2084	Piston, return	1	270	1084	. Pin	2
125	151	O-ring	1	275	1085	. Screw	2
130	2068	Fork, shaft, piston	1	280	1086	. Bolt	2
135	1095	Dowel pin	1	285	975	. Nut	2
140	551	Ring, locking	2	290	1087	. Washer	2